

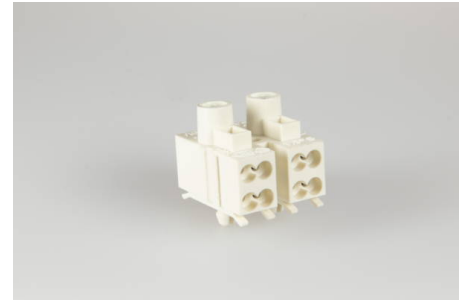


Screw-Screwless Connectors

900 Q RZ/ 2 DS

Order Info

reference number (ref. no.)	114302
PU	1,500
EAN	4028012104529



Type

Type	Terminal Block
connection type	screw plug-in
number of poles	2 pole
colour	white
wire protection	yes

Electrical Data

rated voltage	450 V
rated current	17.5 A

Connection Data

cross-section rating	1.5 / 2.5 mm ²
cross-section rating internal	1.5 mm ²
cross-section rating external	2.5 mm ²
cross-section rating (UL)	20-16 AWG
clamping range external	0.5 - 1.5 mm ²
type of conductor internal	solid
type of conductor external	fine stranded, stranded, solid
stripping length internal	7.0 - 7.5 mm
stripping length external	8.0 - 8.5 mm
fixing	short catch pin
clamping units per pole	4
contact screw assembly	0.8 x 4.0 / \cup 0.5 Nm
wall thickness	0.5 - 1.4 mm

Ambient Conditions

T _{max} ambient air (at rated current)	85 °C
ammonia resistance	yes

Materials

insulator material	PA
contact material	brass
flammability rating acc. to UL 94	V-2

Approvals

acc. to EN 60998	yes
acc. to UL	yes
acc. to CSA	yes

Accessories

ZEL 110	196420
----------------	--------