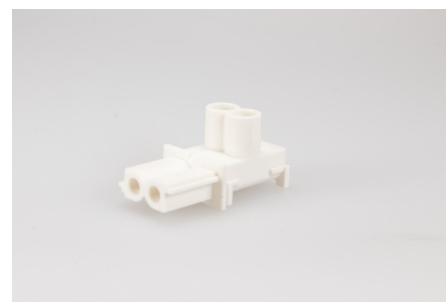




Connectors System AC 164 Plug and Socket Connectors Tall Version

AC 164 BU/ 2 OV WS



Order Info

reference number (ref. no.)	147252
PU	200
EAN	4028012122196

Type

Type	socket
connection type	screw
number of poles	2 pole
coding	1 (mains)
colour	white
protection against incorrect plugging	yes

Electrical Data

rated voltage	250 V
rated voltage (UL)	600 V
rated current	16 A
rated current (UL)	16 A
rated impulse voltage	4.0 kV

Connection Data

cross-section rating	2.5 mm ²
cross-section rating (UL)	16 AWG
clamping range	0.5 - 2.5 mm ²
type of conductor	fine stranded, stranded, solid
stripping length	7.0 mm
clamping units per pole	1
contact screw assembly	PZ 1 / ⚙ 0.5 Nm

Ambient Conditions

T _{max} ambient air (at rated current)	70 °C
IP Code acc. to EN 60529	IP20
IP Code when plugged	IP40

Materials

insulator material	PA
contact material	brass
flammability rating acc. to UL 94	V-2

Approvals

acc. to EN 61535	yes
acc. to UL	yes

Accessories

AC 164 BC/ 2 SW	149562
AC 164 BC/ 2 WS	149552