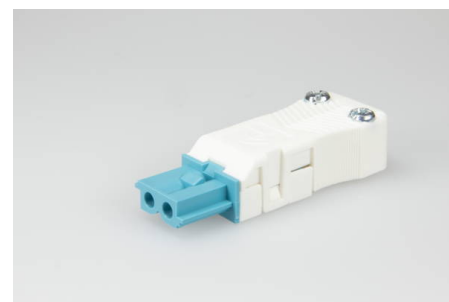




## Connectors System AC 164 Plug and Socket Connectors Flat Version

### AC 164 BUF/ 2 PB ZEL WS



#### Order Info

reference number (ref. no.)	147412
PU	200
EAN	4028012120857

#### Type

Type	socket
connection type	screw
number of poles	2 pole
coding	2 (DALI)
colour	pastel blue white
protection against incorrect plugging	yes
latch	yes

#### Electrical Data

rated voltage	250 V
rated voltage (UL)	600 V
rated current	16 A
rated current (UL)	16 A
rated impulse voltage	4.0 kV

#### Connection Data

cross-section rating	2.5 mm <sup>2</sup>
cross-section rating (UL)	16 AWG
clamping range	0.5 - 2.5 mm <sup>2</sup>
sheathing cable diameter	5.0 - 8.8 mm
type of conductor	fine stranded, stranded, solid
stripping length	7.0 mm
dismantling length	22.0 mm
clamping units per pole	1
contact screw assembly	PZ 1 / ⌀ 0.5 Nm
strain relief assembly	PZ 1 / ⌀ 0.5 Nm

#### Ambient Conditions

T <sub>max</sub> ambient air (at rated current)	70 °C
---	-------

<b>IP Code acc. to EN 60529</b>	IP20
<b>IP Code when plugged</b>	IP40

## Materials

<b>insulator material</b>	PA
<b>contact material</b>	brass
<b>flammability rating acc. to UL 94</b>	V-2

## Approvals

<b>acc. to EN 61535</b>	yes
<b>acc. to UL</b>	yes

## Accessories

<b>AC 164 VT 3/2 PB</b>	23056
-------------------------	-------