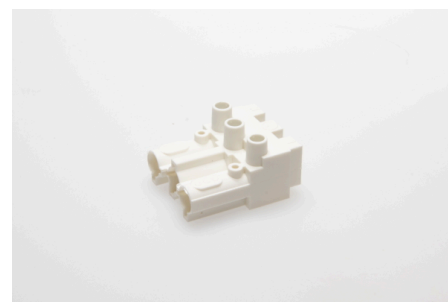




Connectors System AC 166® Classic Plug and Socket Connectors Tall Version

AC 166-A BU/ 3 WS



Order Info

reference number (ref. no.)	163353
PU	200
EAN	4028012107070

Type

Type	socket
connection type	screw
number of poles	3 pole
coding	1 (mains)
colour	white
protection against incorrect plugging	yes
PE-function	yes

Electrical Data

rated voltage	250 V
rated current	16 A
rated impulse voltage	2.5 kV

Connection Data

cross-section rating	2.5 mm ²
cross-section rating (UL)	14 AWG
clamping range	0.5 - 4.0 mm ²
type of conductor	fine stranded, stranded, solid
stripping length	7.0 mm
fixing	Screw
clamping units per pole	1
mounting hole diameter	3.5 mm

Ambient Conditions

T _{max} ambient air (at rated current)	70 °C
T _{max} component (operation)	110 °C
T _{min} component (operation)	-20 °C
IP Code acc. to EN 60529	IP20
IP Code when plugged	IP40

Materials

insulator material	PA
contact material	brass
flammability rating acc. to UL 94	V-2

Approvals

acc. to EN 61984	yes
acc. to UL	yes
acc. to CSA	yes

Accessories

AC 166-A ZEL/ 3 WS	166653
AC 166-A ZEL/ 3 O WS	17619