



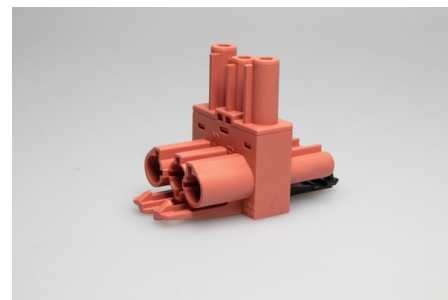
Building Installation Connector System AC 166®

G
Distributors

AC 166 GVTA 3/3 HR

Order Info

reference number (ref. no.)	167273
PU	100
EAN	4028012173341



Type

Type	T-shaped 1 input / 2 outputs, stackable
number of poles	3 pole
coding	3 (mains)
colour	light red
protection against incorrect plugging	yes
PE-function	yes
latch	yes

Electrical Data

rated voltage	250 V
rated current	20 A
rated impulse voltage	4.0 kV

Connection Data

pole marking	L ⊕ N
--------------	-------

Ambient Conditions

T _{max} ambient air (at rated current)	70 °C
T _{max} component (operation)	110 °C
T _{min} component (operation)	-20 °C
IP Code acc. to EN 60529	IP20
IP Code when plugged	IP40

Materials

insulator material	PA
contact material	brass
flammability rating acc. to UL 94	V-2

Approvals

acc. to EN 61535	yes
acc. to UL	yes

Accessories

AC 166 BC/ 3 SW	169783
AC 166 BC/ 3 WS	169773