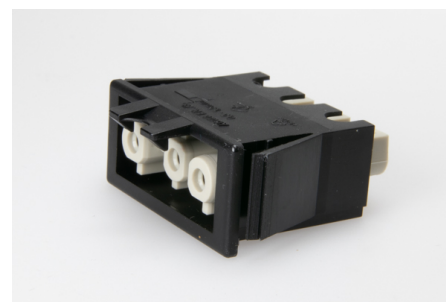




Building Installation Connector System AC 166®

G
Panel Mounting

AC 166 GEBUBV/ 3 KG/SW



Order Info

reference number (ref. no.)	17825
PU	200
EAN	4028012111428

Type

Type	panel mount socket
connection type	screw
number of poles	3 pole
coding	2 (mains)
colour	pebble grey black
protection against incorrect plugging	yes
PE-function	yes
latch	yes

Electrical Data

rated voltage	250 V
rated current	20 A
rated impulse voltage	4.0 kV

Connection Data

cross-section rating	2.5 mm ²
cross-section rating (UL)	14 AWG
clamping range	0.5 - 4.0 mm ²
type of conductor	fine stranded, stranded, solid
stripping length	7.0 mm
fixing	catch wing
clamping units per pole	1
contact screw assembly	0.5 x 3.0 / ⌀ 0.3 Nm
pole marking	L1 ⊕ N
wall thickness	0.5 - 1.5 mm

Ambient Conditions

T _{max} ambient air (at rated current)	70 °C
---	-------

T_{max} component (operation)	110 °C
T_{min} component (operation)	-20 °C
IP Code acc. to EN 60529	IP20
IP Code when plugged	IP40

Materials

insulator material	PA
contact material	brass
flammability rating acc. to UL 94	V-2

Approvals

acc. to EN 61535	yes
acc. to UL	yes
acc. to CSA	yes