



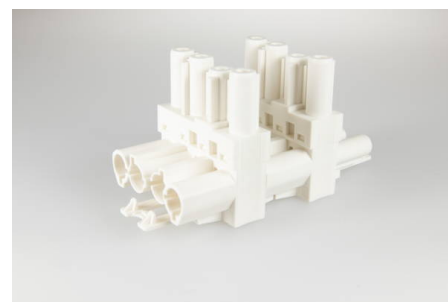
## Building Installation Connector System AC 166®

G  
Distributors

### AC 166 GVT 4/ 4 WS

#### Order Info

reference number (ref. no.)	23942
PU	50
EAN	4028012117468



#### Type

Type	T-shaped 1 input / 3 outputs
number of poles	4 pole
coding	1 (mains)
colour	white
protection against incorrect plugging	yes
PE-function	yes
latch	yes

#### Electrical Data

rated voltage	250 V
rated current	20 A
rated impulse voltage	4.0 kV

#### Ambient Conditions

T <sub>max</sub> ambient air (at rated current)	70 °C
T <sub>max</sub> component (operation)	110 °C
T <sub>min</sub> component (operation)	-20 °C
IP Code acc. to EN 60529	IP20
IP Code when plugged	IP40

#### Materials

insulator material	PA
contact material	brass
flammability rating acc. to UL 94	V-2

#### Approvals

acc. to EN 61535	yes
------------------	-----