

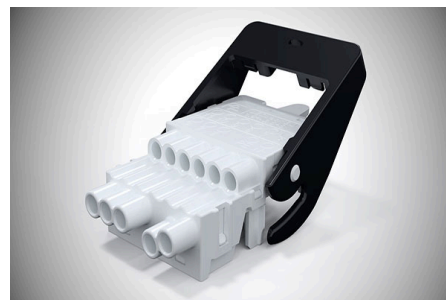


## LEDtrack Row Lighting System LEDtrack Components

### LEDtrack BU/11-7 GEN2

#### Order Info

|                             |               |
|-----------------------------|---------------|
| reference number (ref. no.) | 26901         |
| PU                          | 400           |
| EAN                         | 4028012179633 |



#### Type

|                 |           |
|-----------------|-----------|
| Type            | socket    |
| connection type | push-in   |
| number of poles | 7 pole    |
| colour          | naturalal |
| PE-function     | yes       |
| latch           | yes       |

#### Electrical Data

|                       |        |
|-----------------------|--------|
| rated voltage         | 400 V  |
| rated current         | 16 A   |
| rated impulse voltage | 6.0 kV |

#### Connection Data

|                         |                           |
|-------------------------|---------------------------|
| cross-section rating    | 2.5 mm <sup>2</sup>       |
| clamping range          | 1.5 - 2.5 mm <sup>2</sup> |
| type of conductor       | solid                     |
| stripping length        | 15.0 mm                   |
| clamping units per pole | 1                         |

#### Ambient Conditions

|  |        |
|--|--------|
| T <sub>max</sub> component (operation) | 105 °C |
| T <sub>min</sub> component (operation) | -25 °C |
| IP Code when plugged                   | IP20   |

#### Materials

|                                   |        |
|-----------------------------------|--------|
| insulator material                | PA     |
| contact material                  | copper |
| flammability rating acc. to UL 94 | V-2    |

## Approvals

---

**acc. to EN 61984**

yes

---

## Accessories

---

**LEDtrack ABK**

159901

---